

What Everyone Needs to Know about Homelessness, Railroads and Transit Security



Calio
Education



What Everyone Needs to Know about Homelessness, Railroads and Transit Security

- Diana Palmer, CT
Department of
Transportation
- Jude Garden, Transit
America Services Inc.
- Kay White, Transit
America Services Inc.
- Lt. William Utermarck,
CT State Police





Homelessness, Railroads and Transit Security

Jude Garden and Kaye White

Unhoused and Railroad safety

- Railroads are attractive locations for encampments to be set up. Through presentations like this we are working to ensure that people who work with this population are equipped with the tools to stay safe around the tracks. We need your help to spread the safety message to those in encampments on how to be safe around the railroad.
- Unhoused man struck and killed by train February of 2023, New Haven.
- Unhoused female, threatened suicide by train on multiple occasions. Unfortunately, she was successful in November of 2023.

EVERY 3 HOURS



ANY TIME IS TRAIN TIME



As you approach a railroad crossing, **always expect a train.**

Freight trains do not run on a schedule.

Trains can run on any track, at any time, from either direction.

WHAT WILL YOU DO IF YOU STALL ON THE TRACKS?

If a train is approaching, run toward the train but away from the tracks at a 45-degree angle. If you run in the same direction a train is traveling, you could be injured by flying debris.

1 Get out!

2 Get away from the tracks, even if you do not see a train.

3 Locate the Blue and White Emergency Notification System (ENS) sign, and call the number provided, giving the crossing ID number (this number will be different on each sign).



FREIGHT TRAIN STOPPING DISTANCE

APPROXIMATE STOPPING DISTANCE AT 55 MPH

Car:
200 Ft.

School Bus:
230 Ft.

Semitruck:
300 Ft.

Passenger Train:
600 Ft.

Freight Train:
5,280 Ft.



At **55 miles per hour**, the approximate stopping distance of a freight train could be **a mile or more**:
The distance of **18 football fields!**

BRAKE

STAY OFF! STAY AWAY! STAY SAFE!®

**TRESPASSING IS
DANGEROUS
AND ILLEGAL**



**STAY OFF
RAILROAD
TRACKS!**

Railroad property is
private property.

Being on railroad
tracks or property
without permission is
trespassing, even if
a sign is not posted.

Taking a shortcut
across the tracks can
get you seriously
injured or killed.

911 Dispatcher Call



December 15, 2019

Greenville, South Carolina



Determining Your Location



Grade Crossing Information

Federal Railroad Administration

- Grade Crossing Application – iTunes & Android

FRA Grade Crossing Index

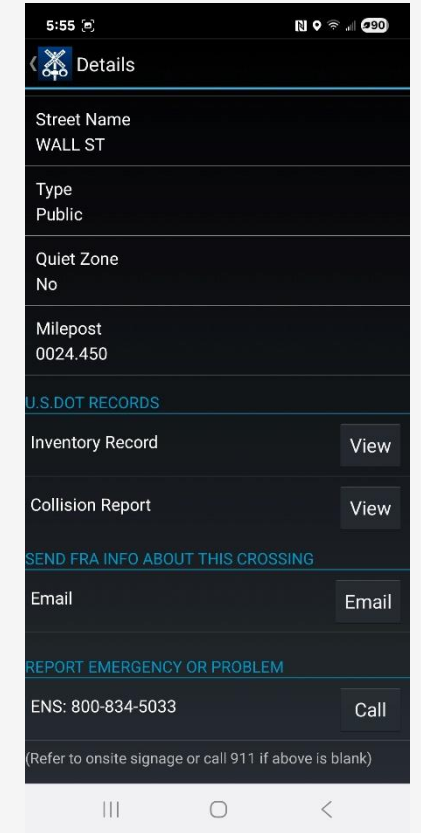
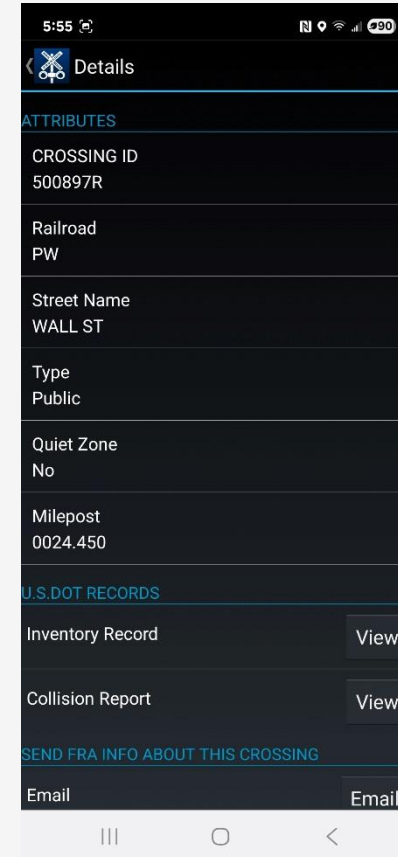
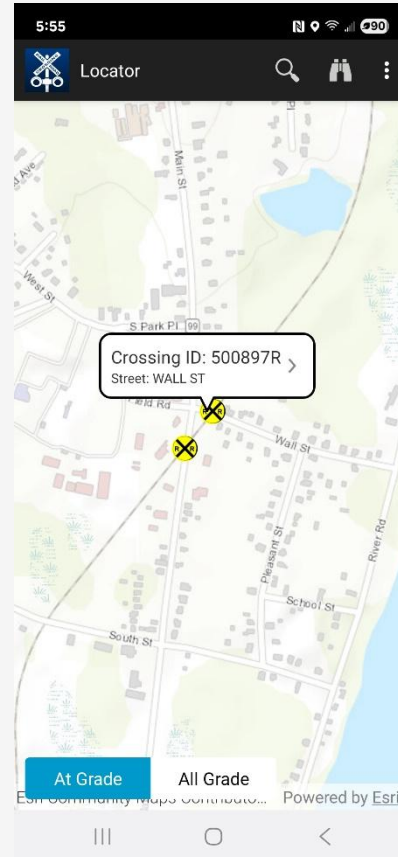
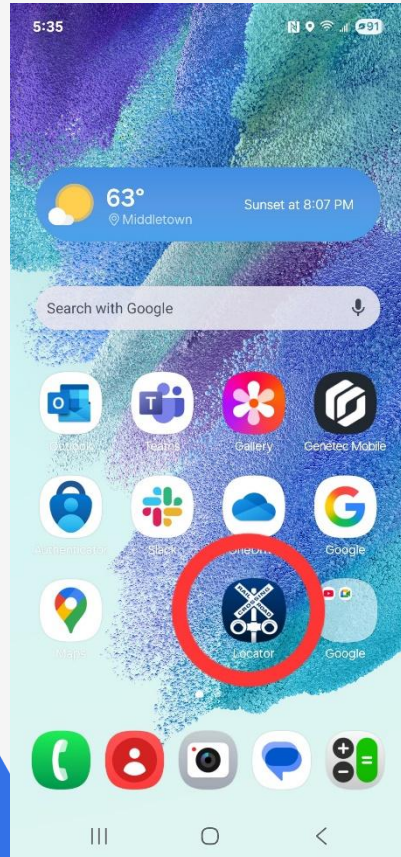
- <http://safetydata.fra.dot.gov/OfficeofSafety/publicsite/crossing/xingqryloc.aspx>

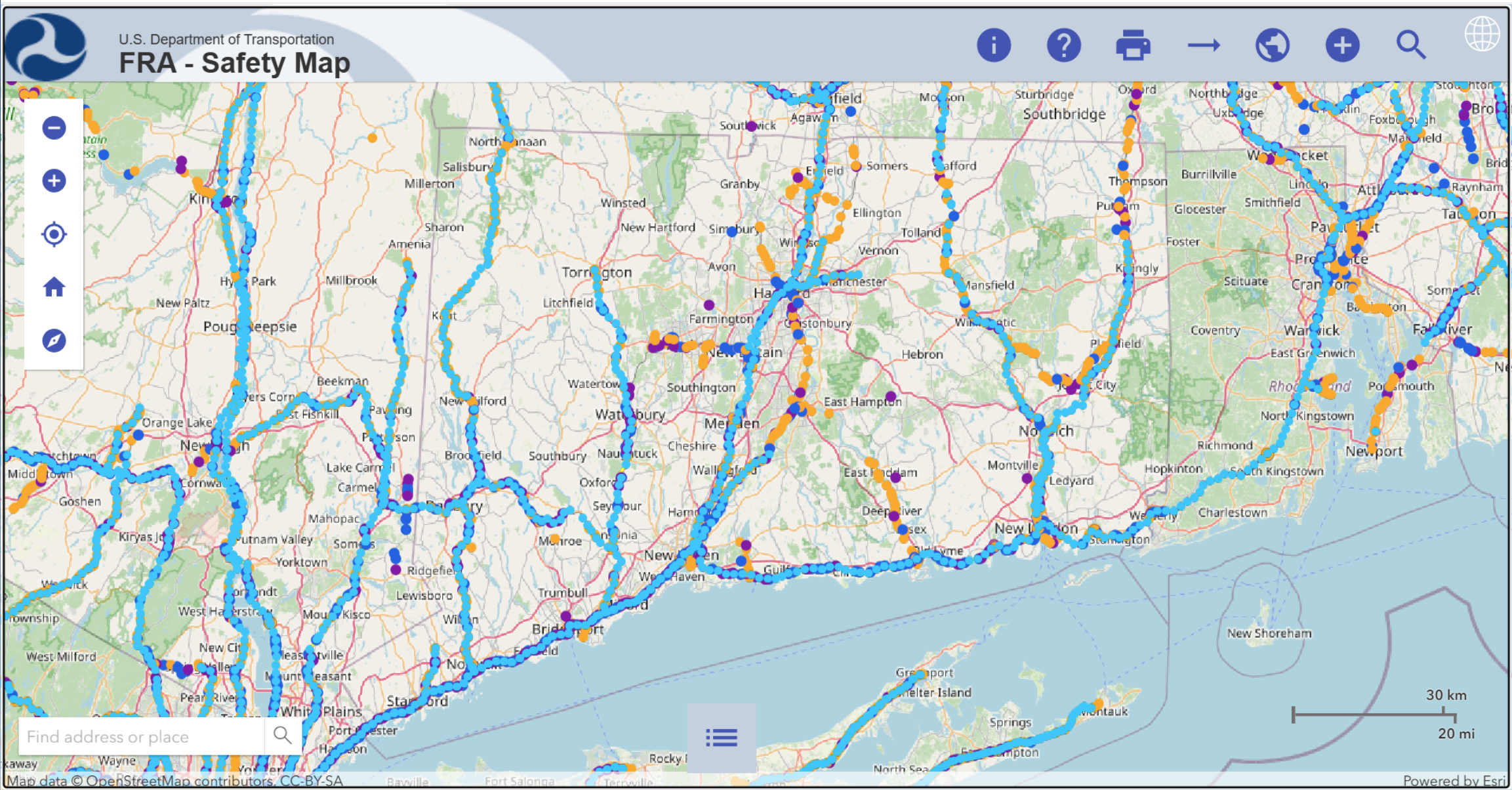
FRA GIS / Track Chart Site

- <http://fragis.fra.dot.gov/gisfrasafety/>



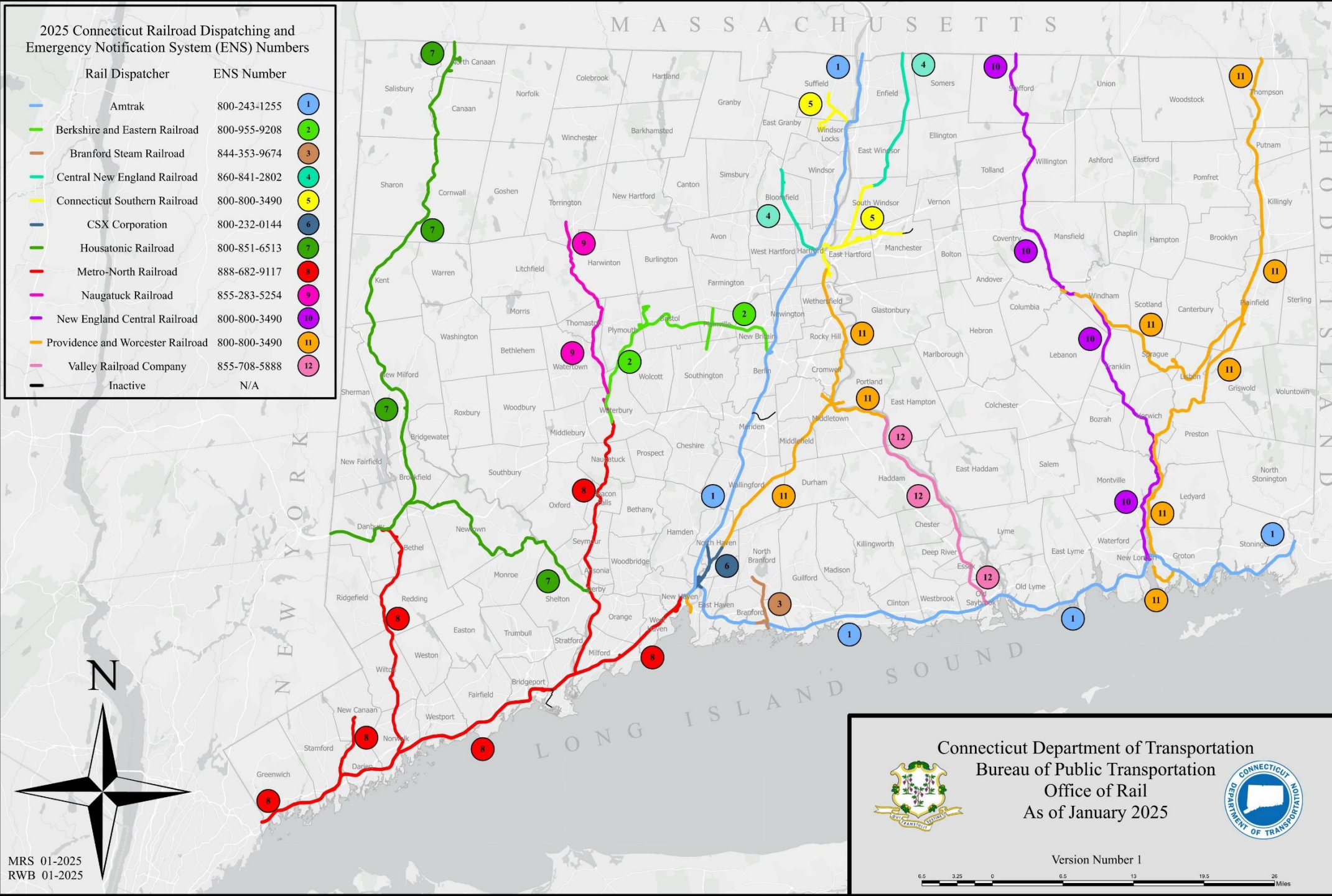
Railroad Crossing Locator App





2025 Connecticut Railroad Dispatching and Emergency Notification System (ENS) Numbers

Rail Dispatcher	ENS Number
Amtrak	800-243-1255
Berkshire and Eastern Railroad	800-955-9208
Branford Steam Railroad	844-353-9674
Central New England Railroad	860-841-2802
Connecticut Southern Railroad	800-800-3490
CSX Corporation	800-232-0144
Housatonic Railroad	800-851-6513
Metro-North Railroad	888-682-9117
Naugatuck Railroad	855-283-5254
New England Central Railroad	800-800-3490
Providence and Worcester Railroad	800-800-3490
Valley Railroad Company	855-708-5888
Inactive	N/A



Town Specific ENS

Emergencies on the Train Tracks or Crossings

IN AN EMERGENCY ON RAILROAD TRACKS WHEN TRAINS MUST BE STOPPED
TO PREVENT LOSS OF LIFE – QUICKLY CONTACT THE APPROPRIATE
NUMBER BELOW:

Railroad Emergency Notification Numbers for Hartford:

***Map 1 – Amtrak – North/South Hartford Union Station –
1-800-243-1255***

***Map 4 – Central New England Railroad – Northwest from Walnut Street towards
Bloomfield – 860-841-2802***

***Map 5 – Connecticut Southern Railroad – CSR Railyard East towards East Hartford
and Southeast towards Wethersfield – 1-800-800-3490***

***Map 11- Providence and Worcester Railroad – From Wethersfield North to Reserve
Road – 1-800-800-3490***

Then call 911!

Learn what to do BEFORE an emergency occurs.

* Determine the nearby railroad(s) based upon your location on the provided Emergency Notification System (ENS) map – and call the provided phone number from a safe location away from the tracks. Give as clear a location as possible that can be understood by people who may not be familiar with your locale (“on tracks between Prospect Street and Main Street” is a better description than “near Dollar General”).

* If near a railroad crossing locate the blue ENS sign adjacent to the crossing, use the phone number provided on the sign, and give the dispatcher the **Crossing I.D. number**.



STAY BACK – STAY AWAY – STAY ALIVE!!!!

FOR MORE INFORMATION or ENS TRAINING PLEASE CONTACT CTDOT



Polaris – Human Trafficking and the Transportation Industry Study



- 63% of respondents stated that they were trafficked via public transportation.
- 26% of respondents stated that they utilized public transportation during at least one of their escape attempts.
- Many runaway and unhoused youths utilize public transportation centers as a last resort for shelter.
- Low cost, no credit card needed (many operators take cash), and less interaction with officials including not needing an ID to travel allows anonymity.

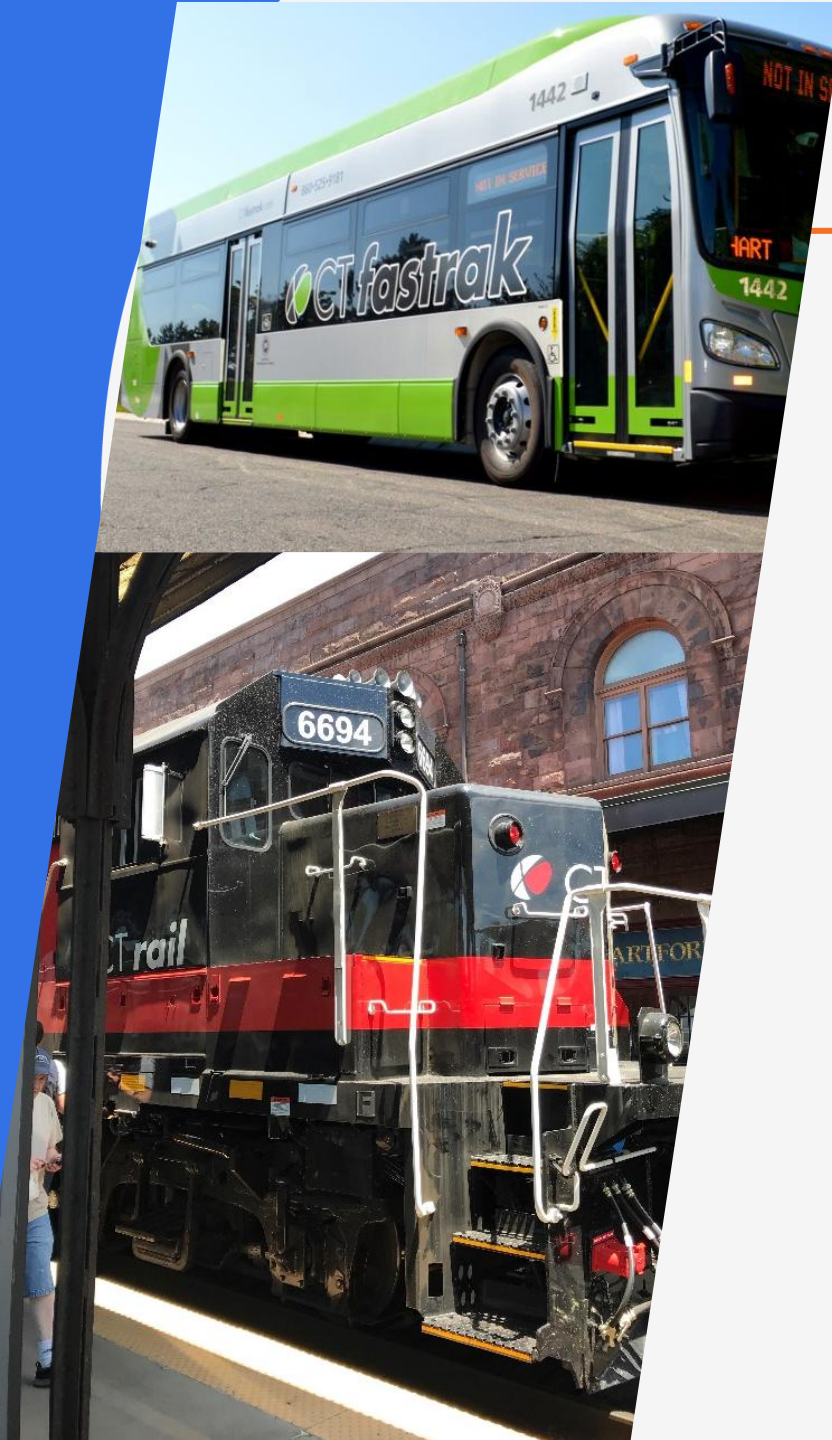
CTrail and CTfastrak Transit Security Program

The mission of the CTrail Hartford Line and CTfastrak Transit Security Program with participation from our surrounding community partners is to provide a safe and secure public transportation network that will help build economic growth in the region.

Officially launched November 2023.

The program was created as a preventive measure and to reduce incidents along both the CTrail Hartford Line and CTfastrak.

The program is focused on helping to connect people with the services they need who are throughout the Transportation system.



Program Mission

Team Members:

Connecticut State Police, 4 Troopers

Amtrak Police, 1 Officer

T-HOP (Transit Homeless Outreach Program from DMHAS)

TASI Director of Security

TASI Manager of Security

TASI Outreach/Customer Service Representative

DOT Liaison from the Office of Rail

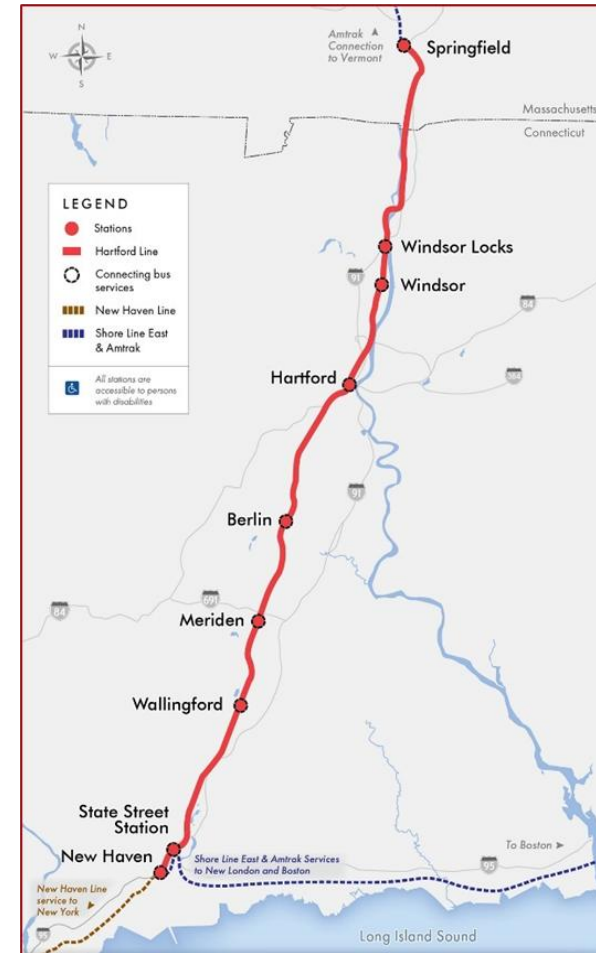
Other federal, state and local law enforcement



Service Overview



- ▶ New Britain Station
- ▶ East Main Street Station
- ▶ East Street Station
- ▶ Cedar Street Station
- ▶ Newington Junction Station
- ▶ Elmwood Station
- ▶ Flatbush Station
- ▶ Kane Street Station
- ▶ Parkville Station
- ▶ Sigourney Street Station



- ▶ New Haven Station
- ▶ State Street Station
- ▶ Wallingford Station
- ▶ Meriden Station
- ▶ Berlin Station
- ▶ Hartford Station
- ▶ Windsor Station
- ▶ Windsor Locks Station
- ▶ Springfield

Program Approach

Education and Communication

- Code of Conduct
- Ride with Respect campaign
- Fare inspectors
- Monthly Community stakeholder meetings



Safety and Security

- State Police
- Local Police
- Amtrak Police
- Transit Station Security
- Transit Station Customer Service
- Fencing
- Lighting
- Station/Platform design

Services and Support

- Substance Use Treatment Programs
- Local Mental Health Authorities
- Healthcare
- Peer Supports
- Harm Reduction Services
- Shelter Diversion/Prevention
- Street Outreach Teams
- Housing Supports

Code of Conduct



CODE OF CONDUCT

The Connecticut Department of Transportation (CTDOT) is committed to the security and safety of the traveling public and its transit employees. This CT fastrak Code of Conduct has been established to create a safe and welcoming environment for its passengers.

THE FOLLOWING ACTIVITIES AND CONDUCT ARE PROHIBITED AT OR ON CT fastrak STATIONS AND BUSES:



1. Littering, or public indecency;
2. Engaging in abusive, belligerent, threatening, harassing, or dangerous behavior, or obscene language or action;
3. Panhandling or solicitation of money;
4. Loitering, occupying more than one seat in a station that would interfere with the comfort of other passengers;
5. Sleeping or laying down in any part of the station;
6. Refusing to pay a fare or show proof of payment of fare when requested by official personnel. Misusing fare media, distributing, displaying, or selling counterfeit or stolen fare media (**All persons are subject to providing a valid ticket upon request by authorized security or police.**);
7. Consuming alcohol; smoking marijuana or tobacco, vaping e-liquid, or using a controlled substance without a valid prescription in stations, or within 25 feet of entrances to stations and enclosed areas;
8. Bringing an animal, other than a service animal for bus travel (service animals include any guide dog, signal dog or other animal individually trained to work performed tasks for an individual with a disability; emotional support animals or "comfort animals" are not service animals.);
9. Unauthorized and/or unapproved solicitation, sale, offer for sale and delivery, barter, or exchange of any goods, services or merchandise;
10. Accessing the CT fastrak guideway, or entering or attempting to enter any area to which public access is limited or restricted;
11. Illegally carrying a firearm or dangerous weapon;
12. Bringing hazardous chemicals or substances, including fuel or flammable liquids, into any station;
13. Distributing written materials, goods, products, or food; soliciting signatures related to charitable, religious, or political causes; or engaging in artistic performance or public speaking, unless prior permission has been received;
14. Placing baggage or personal items on seats or benches or leaving baggage unattended at any time. **Unattended baggage is subject to search and removal;**
15. Defacing (including creating graffiti), vandalizing, damaging, destroying, or tampering with CT fastrak stations, equipment or landscaping;
16. Selling, distributing, possessing, dispensing, purchasing, transferring or being under the influence of controlled substances, alcoholic beverages, or other intoxicants at any time on, in, or around transit stations;
17. Engaging in disorderly or disturbing conduct, including unreasonably loud conduct, such as the use of audio devices at high volume; and
18. Using any unauthorized vehicle, equipment, machinery, apparatus, or device that may interfere with the use of the CT fastrak station.

Violating the Code of Conduct may result in a verbal warning by law enforcement, CT transit employees, or on-site security. Failure to comply with a verbal warning may result in an order by law enforcement to leave the property. Failure to comply with an order to leave may result in a charge for criminal trespass in the first degree, pursuant to Section 53a-107 of the Connecticut General Statutes, and other applicable charges.

April 2024

Ver el otro lado para español →

Visit www.cttransit.com for schedules or additional information at our Customer Service Center. 860-525-9181



CODE OF CONDUCT

The Connecticut Department of Transportation (CTDOT) owns and operates rail stations and adjacent parking facilities ("Rail Facilities") throughout the State. To provide a safe, clean, and welcoming environment, visitors to Rail Facilities must follow this Code of Conduct.

THE FOLLOWING ACTIVITIES AND CONDUCT ARE PROHIBITED AT THE RAIL FACILITY

1. Littering, creating unsanitary conditions, or engaging in acts of vandalism or graffiti.
2. Panhandling or soliciting money donations.
3. Engaging in abusive, belligerent, threatening, harassing, or dangerous behavior, or obscene language or action.
4. Laying down in any part of the station, except at times of mass transportation failure causing delays.
5. Occupying an area with signage designating it as a passenger area unless qualified as a ticketed passenger, accompanying a ticketed passenger, or waiting for the arrival of a passenger.
6. Being shirtless or without footwear.
7. Consuming alcohol or cannabis, smoking, vaping, or using a controlled substance, except pursuant to a valid prescription.
8. Blocking or impeding safe access to any area, entering, or attempting to enter any area to which public access is limited or restricted.
9. Entering the Rail Facility with any animal other than a service animal or an animal permitted for onboard travel.
10. Engaging in any commercial activity or interfering with the commercial activities of Rail Facility lessees or tenants.
11. Operating any unauthorized vehicle, equipment, machinery, apparatus, or device that may interfere with the use of the Rail Facility.
12. Illegally possessing a firearm or dangerous weapon.
13. Possessing hazardous chemicals or substances, including fuel or flammable liquids.
14. Distributing written materials, goods, products, or food, soliciting signatures related to charitable, religious, or political causes, or engaging in artistic performance or public speaking, unless prior permission has been received.
15. Placing baggage or personal items on seats or benches or leaving baggage unattended at any time. **Any unattended baggage is subject to search and removal.**

Violating the Code of Conduct may result in a verbal warning by law enforcement, the Rail Facility manager or on-site security. Failure to comply with a verbal warning may result in an order by law enforcement to leave the property. Failure to comply with an order to leave may result in a charge for criminal trespass in the first degree, pursuant to Section 53a-107 of the Connecticut General Statutes, and other applicable charges.

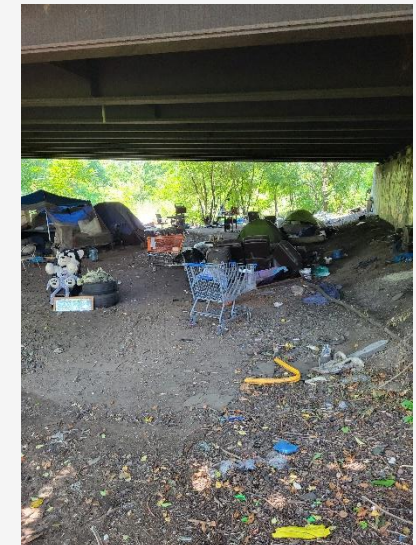
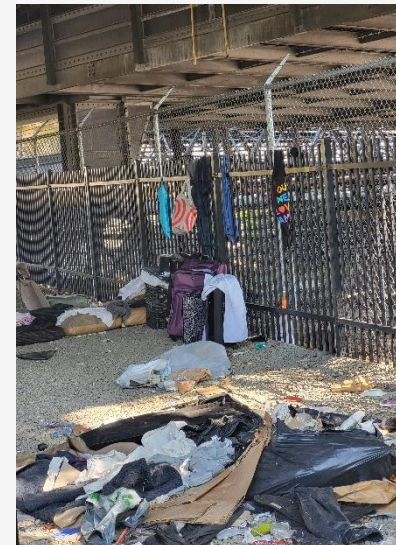
November 2023



Encampments

Encampment Policy

- Increase in Homeless encampments around **CTfastrak** stations and rail right-of-way
- September of 2022 CTDOT adopted a formal Homeless Encampment Policy
- Policy requires involvement of homeless outreach
 - T-HOP is engaged for sites along CTrail and CTfastrak





Program Take Away



Multifaceted Approach



Engage with the Professionals



Vigilance and Communication



Maintain High Standards

Transit Homeless Outreach Program

T-HOP

- **Partnership with DMHAS
(Department of Mental Health
and Addiction Services)**
- **T-HOP is made up of three teams
who specialize in harm reduction,
homeless outreach, mental
health and substance use
services**
 - *CTfastrak/CTrail*
 - New Haven Team
 - Bridgeport to Stamford Team
- **Work evenings and weekends**



Outreach Program

For the quarter (July, August, and September), the CTrail Outreach Program had 404 engagements with unhoused individuals and made 46 referrals for assistance.

July	August	September
167 Engagements	107 Engagements	130 Engagements
19 Referrals	12 Referrals	15 Referrals



Outreach Program

For the quarter (October, November, December), the CTrail Outreach Program had 355 engagements with unhoused individuals and made 27 referrals for assistance.

October	November	December
181 Engagements	65 Engagements	109 Engagements
8 Referrals	5 Referrals	14 Referrals



Outreach Program

For the quarter (January, February, and March), the CTrail Outreach Program had 231 engagements with unhoused individuals and made 44 referrals for assistance.

January	February	March
120 Engagements	64 Engagements	47 Engagements
15 Referrals	22 Referrals	7 Referrals



Law Enforcement



Connecticut State Police is the lead agency for enforcement along the *CTfastrak*

Amtrak Police is the lead agency for the *CTrail* Hartford Line with support from the Connecticut State Police

Connecticut State Police and Amtrak Police are supported by municipal and federal law enforcement agencies

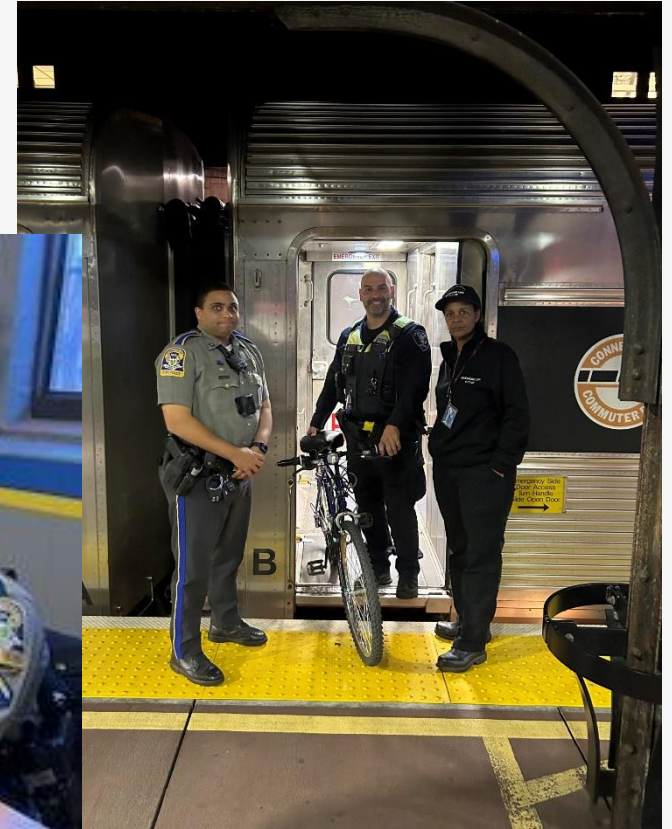


Law Enforcement

Law enforcement works together with outreach to assist people who are in need of services along the *CTfastrak* and the *CTrail* Hartford Line.

They connect people with the T-HOP teach to help get them access to services.

Police will make arrests, when necessary, but the main goal of the program is to work to make the system as safe and secure as possible for the passengers and employees.



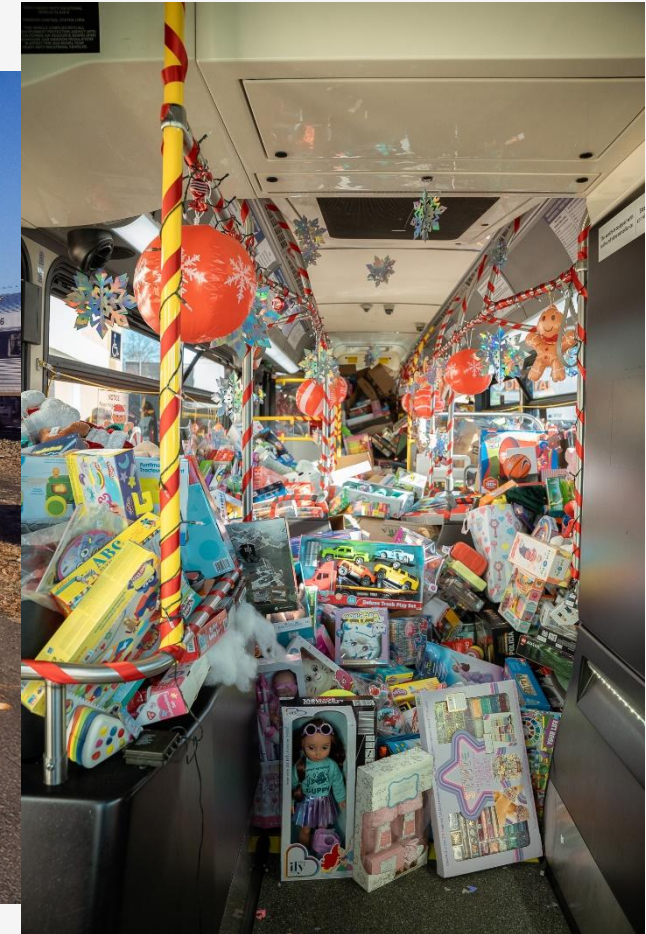
Law Enforcement



Types of Incidents include:

- Crashes
- Assaults
- Disorderly conduct
- Disturbances
- Fighting
- Medical including naloxone use for possible overdoses
- Trespassing
- Outreach contacts
- Suspicious incident or person
- Unattended bag

Giving Back



Collaboration



Partnership



Connection



Affiliation



Alliance



Teamwork



Community

Contact Us

Diana Palmer
CTDOT
diana.palmer@ct.gov
860-593-0345

Jude Garden
TASI/CTrail
jgarden@tasi.com
203-824-2936

Kaye White
TASI/CTrail
mwhite@tasi.com
203-215-2503



THANK YOU



Thank You!

For any questions email
info@cceh.org

Visit our website cceh.org

