

Bridging Workforce Development And Homeless Services To End Youth Homelessness

Tracks:

**Youth Engagement &
Leadership In Ending
Homelessness**

**Sharing Solutions: Working
Across Systems To Improve
Housing Outcomes**

Track Sponsor:



**Creative Strategies To
Prevent And End Student
Homelessness**

Track Sponsor:



A special thanks to our Presenting Sponsor:



Presenters:

Rebecca Allen

Melville Charitable Trust

Stacey Violante Cote

Center for Children's Advocacy

Anne Carr

Career Resources

Rochelle Currie

The Connection Inc.

Kelly Fitzgerald

United Way of Greater New Haven

Lisa Bahadosingh

Supportive Housing Works

Eliza McNamara

Supportive Housing Works

The image features a dark grey background with three overlapping circles in shades of blue. A wide, white horizontal band cuts across the middle of the circles. The text is centered within the white band.

Annual Training Institute

May 2019

Eliza McNamara, Youth
To Lead Change, Chair

Employment for Adolescents & Young Adults

Employment for
Adolescents/Young
Adults

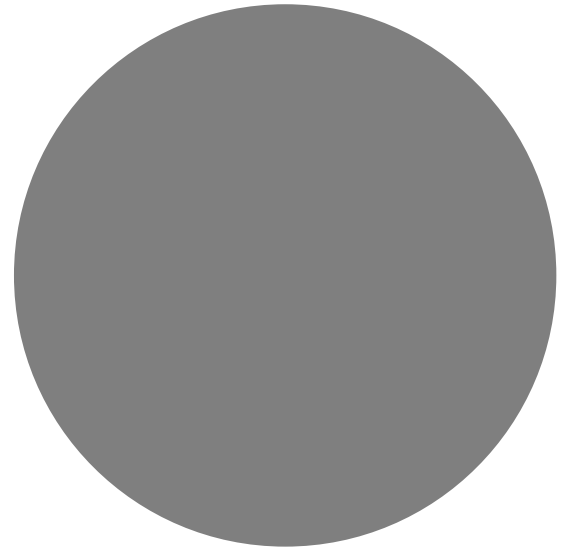
What was your first job?

How did you get it?



National Overview: Youth Employment

Becca Allen, Melville
Charitable Trust



Employment is Critical to Ending Youth Homelessness!

Stacey Violante Cote, Center for Children's Advocacy

Connecticut's Public Workforce System

Anne Carr, Career Resources

Employment Connections & Coordinated Entry in Hartford County

Rochelle Currie, The
Connection

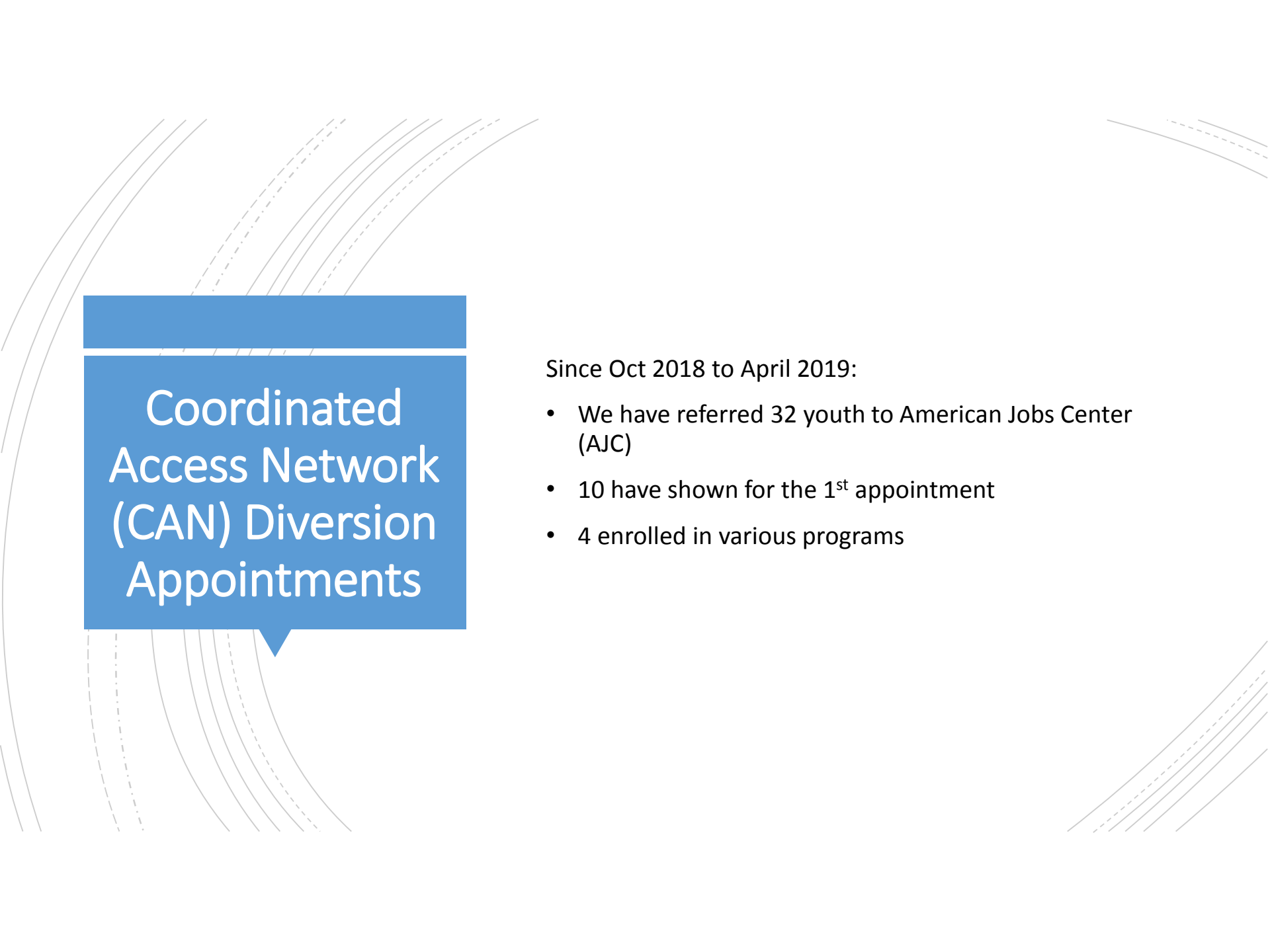
Coordinate d Access Network (CAN) Diversion Appointme nts

Young adult (18-24) calls 211 and is scheduled for an appointment.

CAN Staff meets with the client to discuss their current housing situation (e.g., couch surfing, sleeping outside or staying with friends/family)

During this appointment- The staff uses the Young Adult Protocol to determine what type of resource or referral the young adult may need or benefit from.

Employment- On an average week The Connection can complete 16 appointments. Approximately 2 out of 10 have either part-time or full-time employment



Coordinated Access Network (CAN) Diversion Appointments

Since Oct 2018 to April 2019:

- We have referred 32 youth to American Jobs Center (AJC)
- 10 have shown for the 1st appointment
- 4 enrolled in various programs



Bridging Youth Homelessness & Employment in Greater New Haven

Kelly Fitzgerald, United Way of Greater New Haven



Developing Cross-Sector Partnerships in Fairfield County

Lisa Bahadosingh, Supportive Housing
Works

How the Work Started in Bridgeport



Ask the experts (employers and youth)

Understand their biggest concerns, challenges, and needs



Bring the right partners to the table to create solutions

Business Sector/Employers

Workforce Development

Youth with lived experience of homelessness

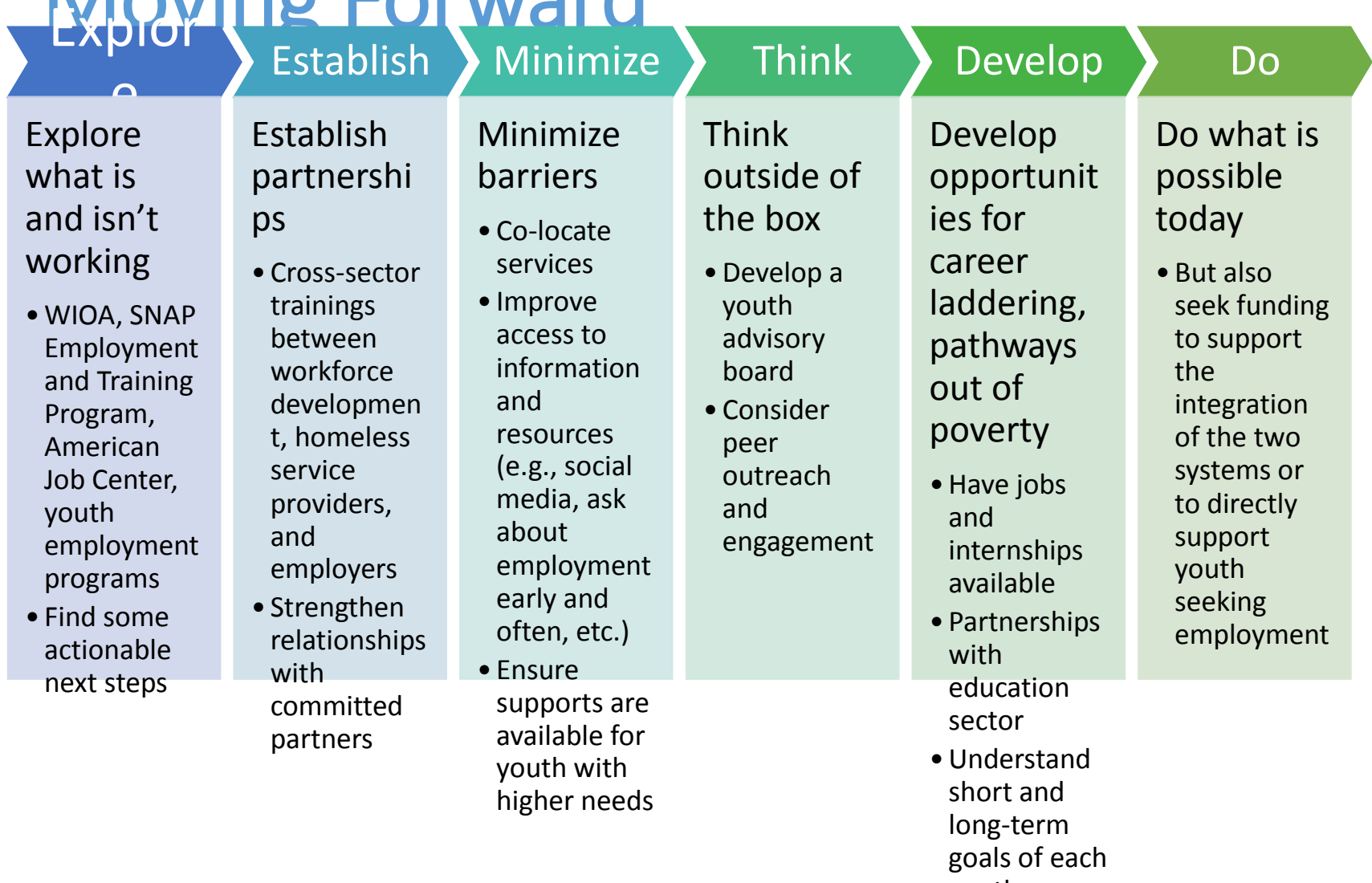
CAN, RRH providers

Supportive Services

Education sector

Others (mentors, peers, faith-based leaders, etc.)

Moving Forward



Question for the Panel

- What should others (i.e., providers, funders, employment support specialists, employers, community members, etc.) know or do in order to support youth going to work?





Q & A?

Contact Info

Rebecca Allen (rallen@melvilletrust.org)

Stacey Violante Cote (sviolante@cca-ct.org)

Anne Carr (Carr@CareerResources.org)

Rochelle Currie (rcurrie@theconnectioninc.org)

Kelly Fitzgerald (kfitzgerald@uwgnh.org)

Lisa Bahadosingh (lisa@shworks.org)

Eliza McNamara (emcnamara@thehubct.org)

Questions?

Visit: <https://www.cceh.org/ati-2019/> or
contact training@cceh.org

A special thanks to our Presenting Sponsor:

BANK OF AMERICA

