

QUEERING CARE

Supporting and Engaging LGBTQ* youth
experiencing homelessness

AGENDA

Intro

Queer and Trans* 101:

- Vocab
- Context

Best Practice:

- Culture
- Advocacy / Safety / Privacy
- Connecting with Community Resources

Individualized Application:

- Agency Audit
- Reflection
- Questions?

OBJECTIVES

Basic vocabulary and framework for working with Queer and Trans* youth

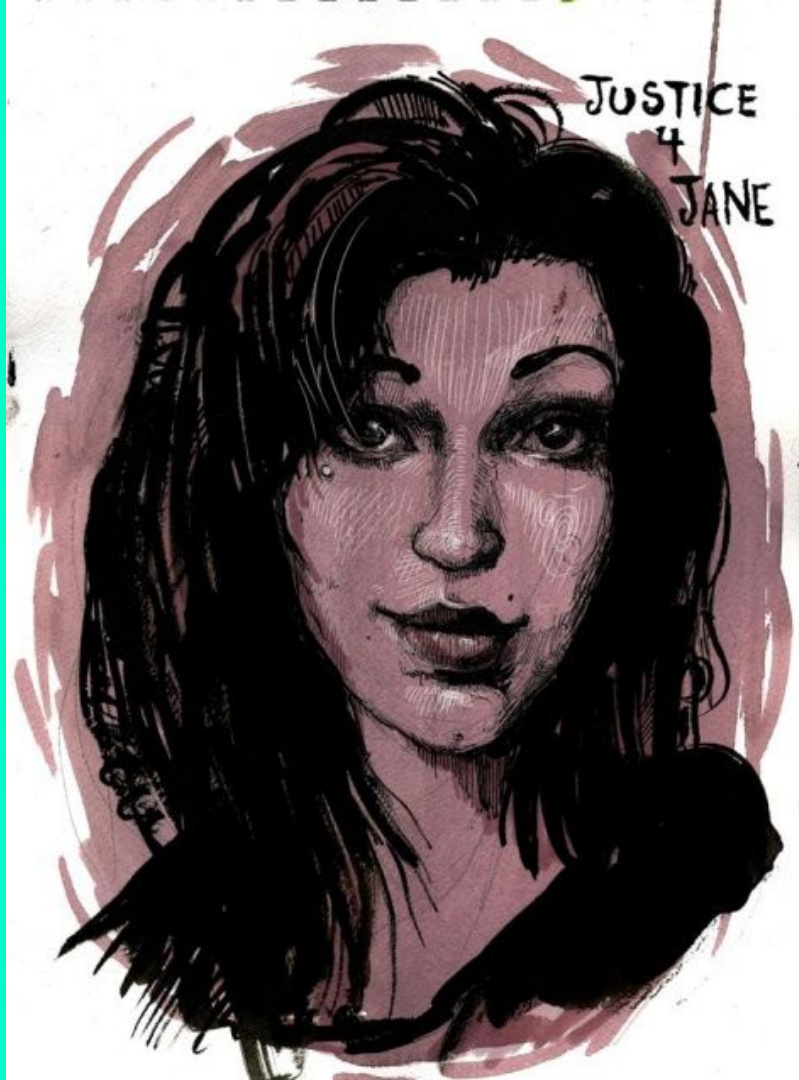
Overview of best practices for providing inclusive and respectful care for Queer and Trans* clients

Provide tools to reflect on your current practice and start to make organizational changes

Build networks of service providers dedicated to providing excellent care to Queer and Trans* youth in Connecticut

Promote the safety, dignity and well-being of LGBTQ persons experiencing homelessness

CASE STUDY:
JANE DOE



QUEER + TRANS 101

STUDIES ESTIMATE THAT 20-40% OF HOMELESS
YOUTH IDENTIFY AS QUEER OR TRANSGENDER,
COMPARED TO 5-10% OF THE GENERAL YOUTH
POPULATION

FRAMEWORK:

CULTURAL COMPETENCY VS. CULTURAL HUMILITY

DO YOUR OWN RESEARCH: GOOGLE!

MIRRORING AND INSIDER LANGUAGE

THE BASICS:

Sex: biological identification as female, male, or intersex based on genitals, chromosomes, hormones, and secondary sex characteristics.

Gender: social and legal status as male or female.

Gender Identity: the innermost feelings about one's sex, gender, and gender role.

Gender Expression: external presentation of gender (clothing, behavior, speech etc.)

Sexuality: cluster of behaviors, practices and identities related to who an individual desires or has romantic and/or erotic connections with.

Transgender:

- Transgender Man (FTM) identifies as male, assigned female at birth
- Transgender Woman (MTF) identifies as female, assigned male at birth

Transition: a period of time during which people undertake the social, legal, and medical process of living as their gender identity

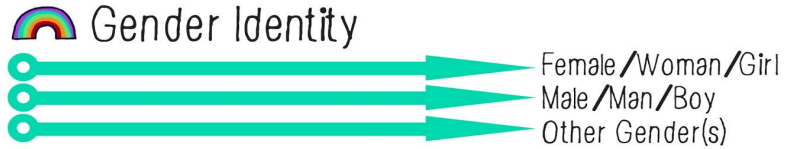
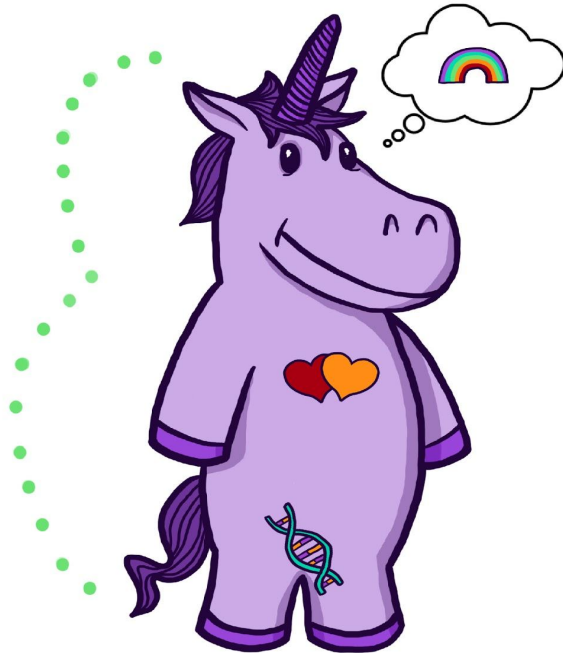
Cisgender: someone whose gender identity and biological sex match

Gender non-conforming: someone who identifies between, or outside of, the gender binary (male/female)

Queer: A reclaimed slur used as an umbrella term for LGBTQ people. A political orientation which advocates breaking binary thinking by recognizing both sexuality and gender identity as potentially fluid

The Gender Unicorn

Graphic by:
TSER
Trans Student Educational Resources

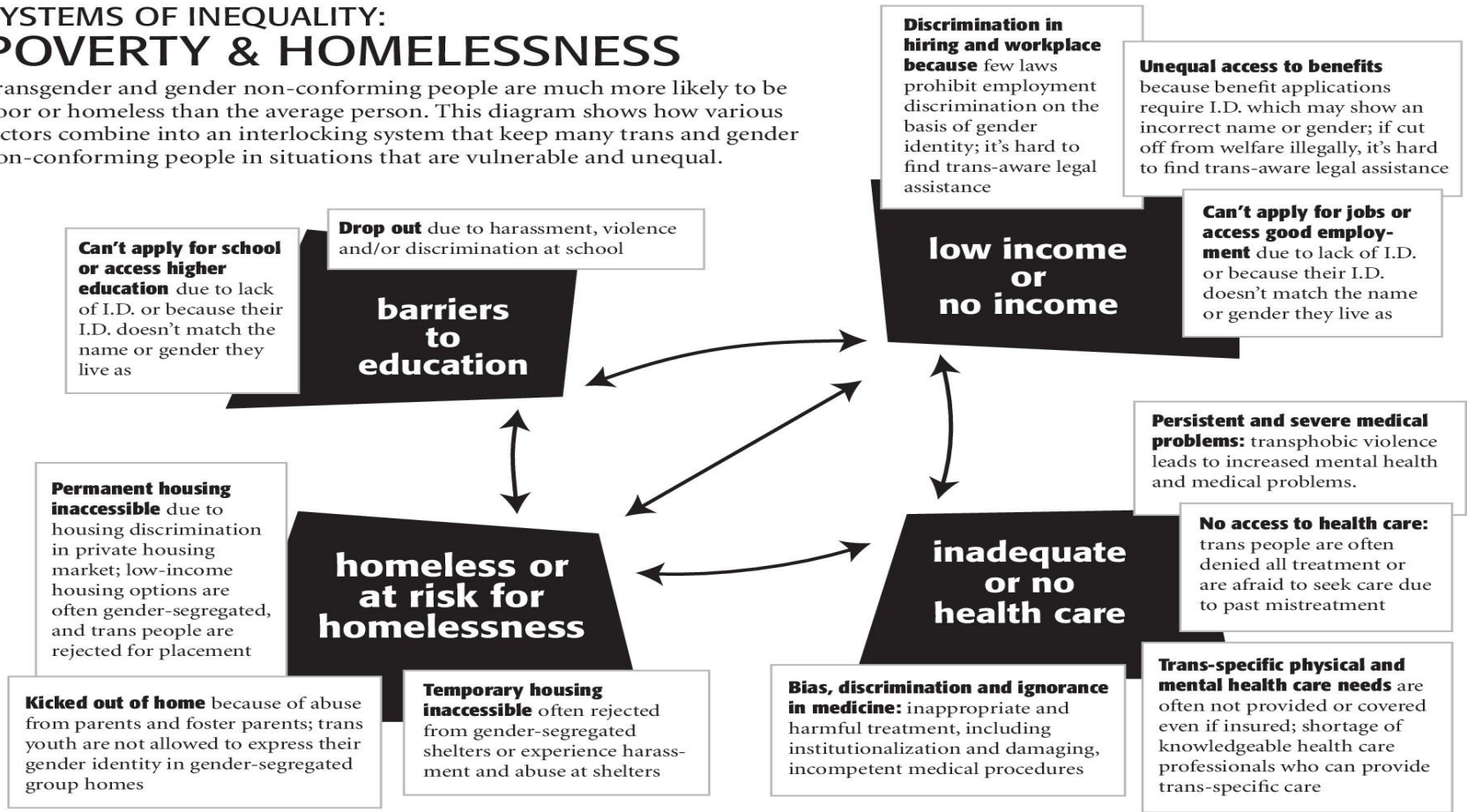


To learn more, go to:
www.transstudent.org/gender

Design by Landyn Pan and Anna Moore

SYSTEMS OF INEQUALITY: POVERTY & HOMELESSNESS

Transgender and gender non-conforming people are much more likely to be poor or homeless than the average person. This diagram shows how various factors combine into an interlocking system that keep many trans and gender non-conforming people in situations that are vulnerable and unequal.



BEST PRACTICES

For working with Queer and Trans* Youth experiencing
Homelessness

ORGANIZATIONAL CULTURE:

- Policy
- Personnel
- Environment

FROM “MEMO ON CARE FOR TRANSGENDER CLIENTS,” BY E. LARKIN:

... Staff will recognize the gender identity each youth asserts, regardless of what stage of their transition they are in. Staff will not require medical documentation or ‘proof’ of a youth’s gender, and will not make inquiries into their anatomy or medical history. Youth ready to socially transition may express a desire to change their name, pronoun, attire, and access to facilities (like bathrooms). Staff should support youth in this process, while maintaining each youth’s right to privacy. Youths’ actual or perceived gender identity is private information, and sharing it can put transgender youth at risk for discrimination or harassment. Youth have the right to decide when, with whom, and how much information about their gender identity to share.

SAFETY AND PRIVACY

- Advocacy
- Addressing Bias
- Confidentiality
- Privacy

CONNECTING TO COMMUNITY RESOURCES

- Referrals
- Local Resources
- Health Care
- Legal Support

PROMOTING WELL-BEING:

- Access to healthy food
- Providing safe space to exercise
- Connecting with local LGBTQ friendly medical and mental health providers
- Assessing mental health
- Routine screening for suicidality
- Assessing for substance use, including tobacco

PROMOTING SEXUAL HEALTH:

- Routine Assessment:
 - Are you sexually active?
 - Partners and Practices
 - Transactional sex
 - HIV/STI Prevention
 - Pregnancy Prevention
- Providing access to safer sex supplies
- Connecting youth with sexual health clinics, promoting regular STI screening
- PrEP

SUPPORTING HEALTHY TRANSITION:

- Hormones
- Surgery
- Silicone injections
- Electrolysis
- Providing access to gender affirming clothing / products



LEGAL ISSUES

- Necessity of Advocacy
- HUD memo CPD-15-02
- Public Act 11-55 “An Act Concerning Discrimination”
- Identification issues: legal procedure for changing name and gender marker on official documents

AGENCY INVENTORY

Take a moment to reflect on your agency's current practices

- What was the most helpful thing you learned today?
- What are your top three tasks when you return to work?
 - What obstacles do you foresee?

QUESTIONS?

Thank you for your participation!