



COORDINATED EXITS: A CONTINUUM OF HOUSING STRATEGIES

David Rich, Executive Director
Supportive Housing Works

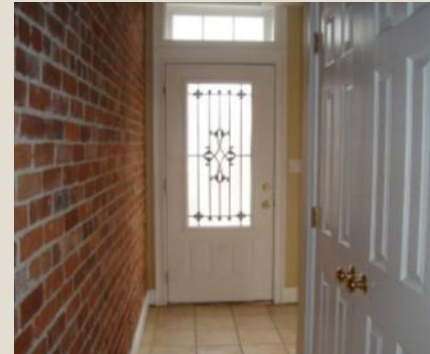
Carla Miklos, Executive Director
Operation Hope

Jessica Kubicki, Manager of Supportive Housing
Family & Children's Agency, Norwalk

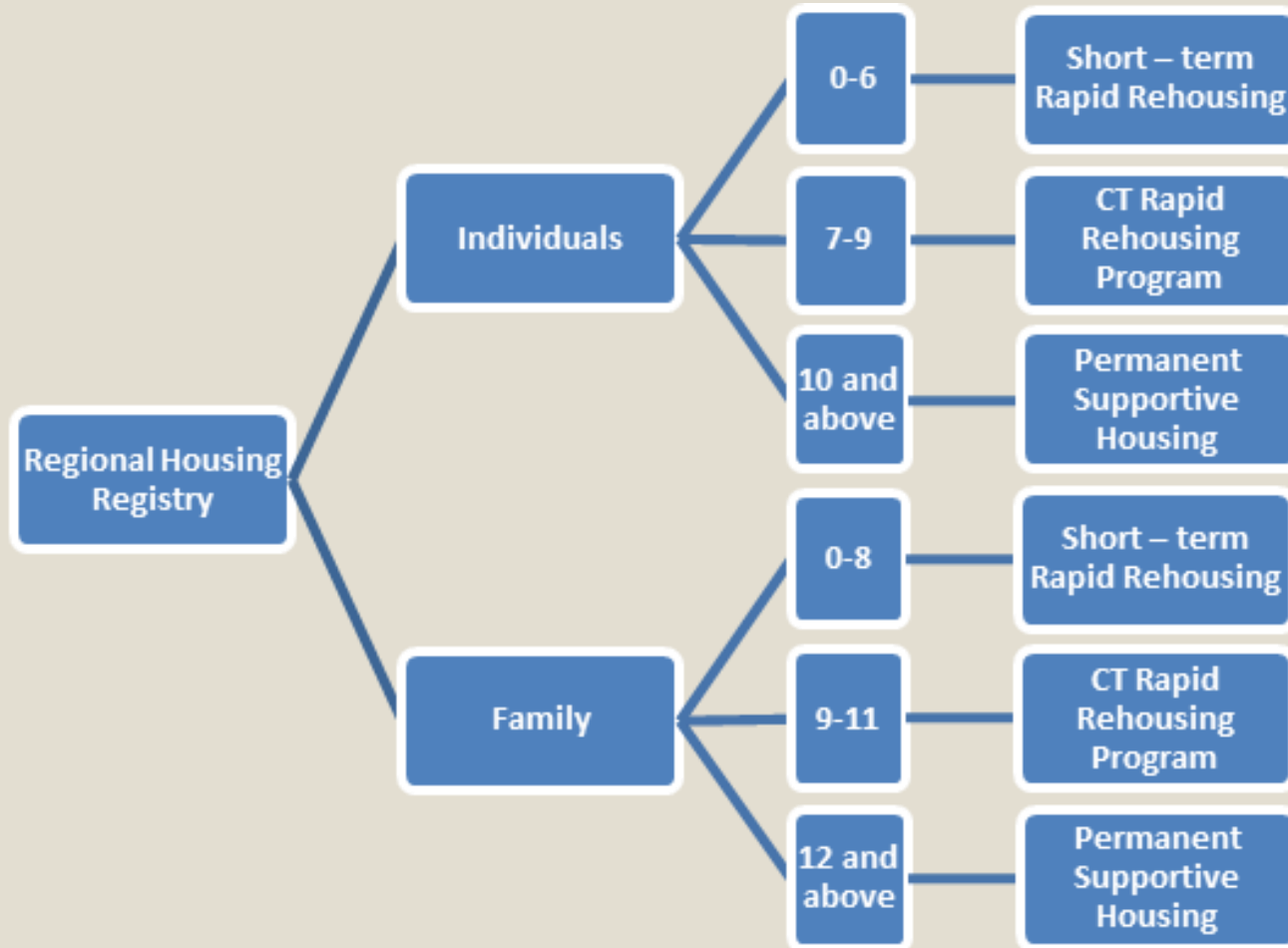
Sophia Carlton, Director of Housing Coordination & Retention
Inspirica

A Systems Approach

- Evidence-based program design & searching for best practices
- Breaking silos and aligning community resources
- Targeting to needs & right-sizing the system
- Lead with housing with effective social service infrastructure



A Path to Progressive Engagement



Evolution of Short-Term Funding and Services

- Beyond Shelter CT Program 2000
- United Way Eastern Fairfield County Rapid Re-housing Pilot 2009
- CCEH Rapid Re-housing Pilot 2010
- HPRP (Homeless Prevention Rapid Re-housing Program) 2009/2010
- CCEH Rapid Re-housing Program (CHFA funds) 2012
- CT RRP (Connecticut Rapid Re-housing Program) 2013
- DOH Short Term Rapid Re-housing Funds 2014



Identifying Funding Sources and Aligning Resources

- DSS (Department of Social Services)
- HUD: ESG (Emergency Solutions Grant)
- Private Funds: United Way, Fairfield County's Community Foundation
- American Reinvestment and Recovery Act
- CHFA Funds
- DOH (Department of Housing)



Collaboration Throughout the Opening Doors Fairfield County Region

- Greater Bridgeport Continuum of Care/Greater Norwalk Continuum of Care/Stamford Greenwich Continuum of Care
- 10 Year Plans to End Homelessness (each of three COC's)
- Fairfield '08
- Supportive Housing Works
- Housing First Collaboration
- COC's Renamed to align with State and Federal Opening Doors Initiatives
- Opening Doors Fairfield County – Interim Merger
- Housing First Team Replication
- CT RRP Collaboration
- Opening Doors Fairfield County – recognized by HUD
- 100 Day Campaign





**100 DAY INITIATIVE:
INCREASING EFFECTIVENESS OF
EXISTING RESOURCES**

Building a true Crisis-Response System:

Weekly regional “Matching Meetings”

- **Assessing** = performing outreach to determine those with immediate shelter needs, future needs, and those who can be diverted with resources
- **Prioritizing** = those with immediate needs are prioritized and matched to a shelter
- **Diverting** = linking to resources for homeless prevention
- **Matching** = clients are connected to shelter or diversion resources
- **Navigating** = each family / individual is connected to a point of contact

Would not be possible without funding for diversion:

- **Be Homeful Fund**
 - 30k available for Families
 - 30k available for Individuals

100 Day Campaign: Collaboration Works!

- Resource “Navigators” identified in Stamford, Norwalk, Danbury and Bridgeport
- Have housed 19 families in Fairfield Co. since the start of the Campaign
- Have housed 55 individuals
- Housed a family of 9 with immediate need when all shelters were at full capacity

Deeply Affordable Housing

- Inspirica purchased and renovated two buildings to house 9 families
- Prioritize families who are in Transitional Housing and who are not eligible for Rapid Rehousing
- Case management, employment and vocational support
- Tenants have one year leases
- Rent is \$775 for a 2 bedroom and \$850 for a 3 bedroom apartment = less than 50% below FMR in Stamford



Housing Stability Fund

- Housing Stability Fund (HSF) – funded by private philanthropy
- Long term rental assistance – up to three years
- Eligibility: Families in Emergency or Transitional Housing
- Prioritize families in TH – who are not eligible for RRP

Upcoming Initiative: Regional Housing Coordination

Monthly Regional Housing Coordination Meetings

Case managers and housing coordinators from each agency will meet monthly to review shelter caseload and identify housing solutions for difficult cases

Pros: Greater access to resources

Regional Landlord Engagement

- Compiled a landlord directory for case managers and housing coordinators to access
- Ideas for future landlord engagement:
 - Newsletters explaining new programs / funding
 - Landlord liaison at each agency to respond to issues



NORWALK
HOUSING FIRST
COLLABORATIVE

NORWALK HOUSING FIRST COLLABORATIVE

- Greater Norwalk Registry Week: October 2013
- VI-SPDAT
- Interagency Collaborative:
 - Family & Children's Agency
 - Homes with Hope
 - Mid Fairfield AIDS Project
 - Open Door Shelter
 - Supportive Housing Works
- Common goal of ending Chronic Homelessness

HOW WE MADE IT WORK

1. Leveraging resources
2. Thinking outside the box
3. Collaborative focus
4. Utilizing/ sharing resources
5. Followed a Housing First model

HOUSING OPPORTUNITIES

- 5 Section 8 Vouchers ported from Bridgeport Housing Authority to Norwalk Housing Authority
- 24 RAP subsidies through DOH
- 5 NHA Public Housing units designated for CH
- 10 RAP subsidies through DOH
- Social Innovation Fund
- Support Services to 5 NHA Public Housing tenants



CREATIVE RESOURCES

- ❑ Fair Market Housing: Landlord Engagement
- ❑ Shared housing
- ❑ Housing Development
 - Shelter for the Homeless: Norwalk SROS for singles
 - Inspirica: Deeply Affordable Housing for families

Contact Information

David Rich

Executive Director

Supportive Housing Works

387 Clinton Avenue

Bridgeport, CT 06605

203-579-3180 ext. 12

david@supportivehousingWORKS.org

Carla Miklos

Executive Director

Operation Hope

636 Old Post Road

Fairfield, CT 06824

203-292-5588 ext. 204

cmiklos@operationhopeCT.org

Jessica Kubicki, LCSW

Manager of Supportive Housing

NHFC Team Leader

Family & Children's Agency

140 Water St, Norwalk CT 06854

203-523-5335

jkubicki@fcagency.org

100,000 Homes Campaign

<http://100khomes.org/>

Sophia Carlton, MSW

Director of Housing Coordination and Retention

Inspirica, Inc.

141 Franklin Street

Stamford, CT 06902

203-388-0164

scarlton@inspiricaCT.org