

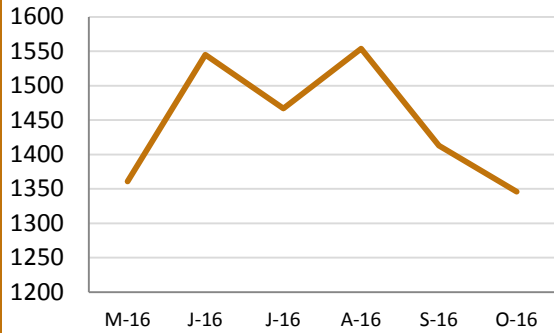
Fairfield County Coordinated Entry Report



October-2016

Number of Calls to 211

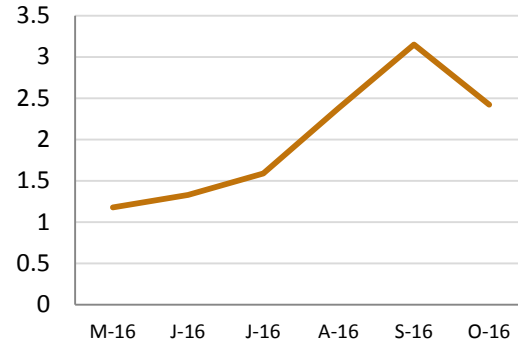
Total Calls This Month: 1,346
 Total Calls Last Month: 1,413
 Last 6 Months Average: 1,448



Data Source: 211

211 Call Wait Times (in Minutes)

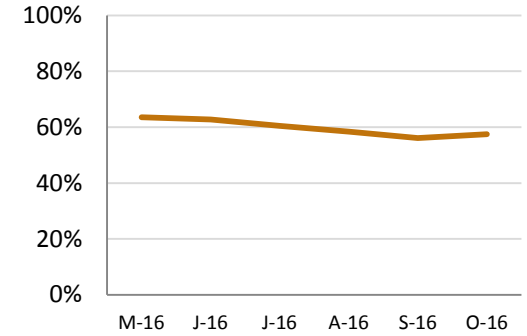
Average This Month: 2.42
 Average Last Month: 3.15
 Last 6 Months Average: 2
 Longest Call Wait Time This Month: 29



Data Source: 211

Percent Diverted by 211

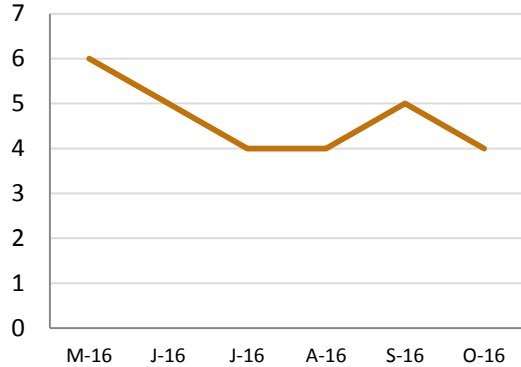
This Month: 57%
 Last Month: 56%
 Last 6 Months Average: 60%



Data Source: 211 and CT HMIS

211 to CAN Appointment Wait Time (in Days)

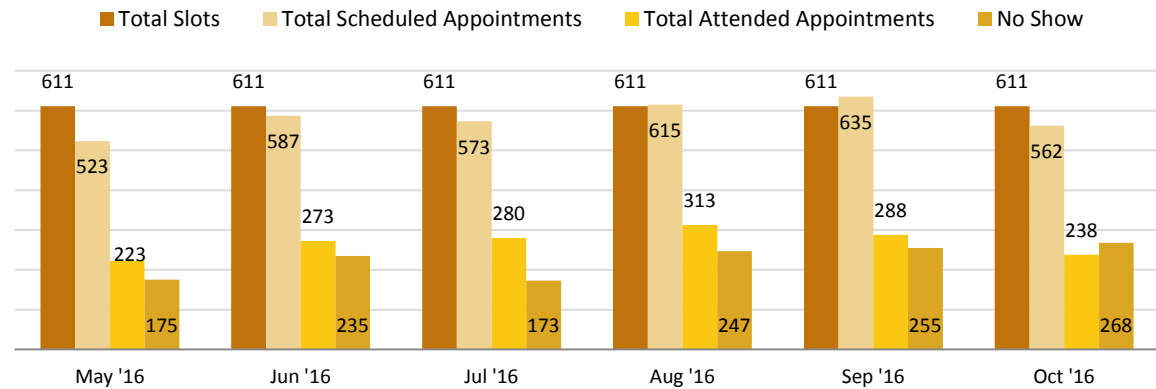
Average Days This Month: 4
 Average Days Last Month: 5
 Last 6 Months Average: 5



Data Source: CT HMIS

Appointment Capacity

Total Number of Appointment Slots: 611
 Total Number of Scheduled Appointments: 562
 Total Number of Attended Appointments: 238
 Total Number of No Shows: 268
 Percent of Appointment Capacity Filled: 92%
 Percent of Appointments Attended: 42%



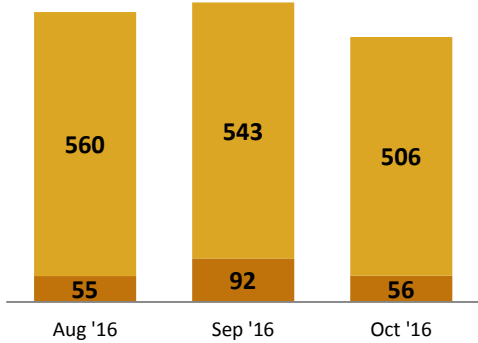
Data Source: CT HMIS

Fairfield County Coordinated Entry Report



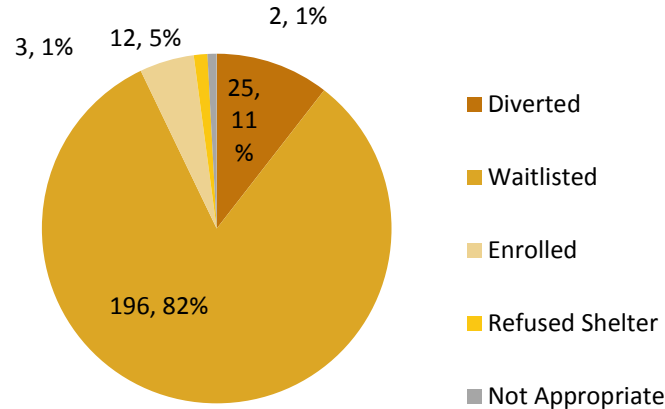
October-2016

Referral Data Completeness Last Three Months



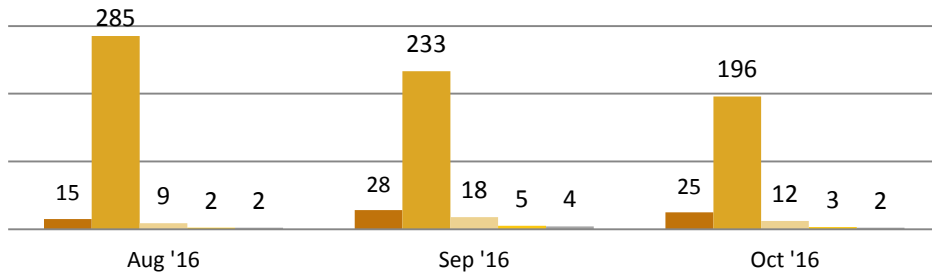
Data Source: CT HMIS

Outcomes of Attended Appointments October 2016



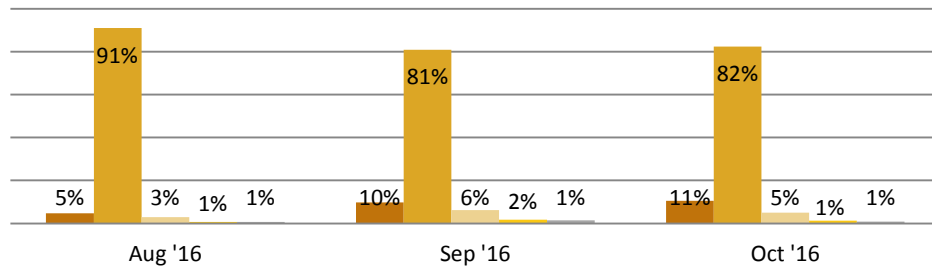
Data Source: CT HMIS

Last Three Months - By Number



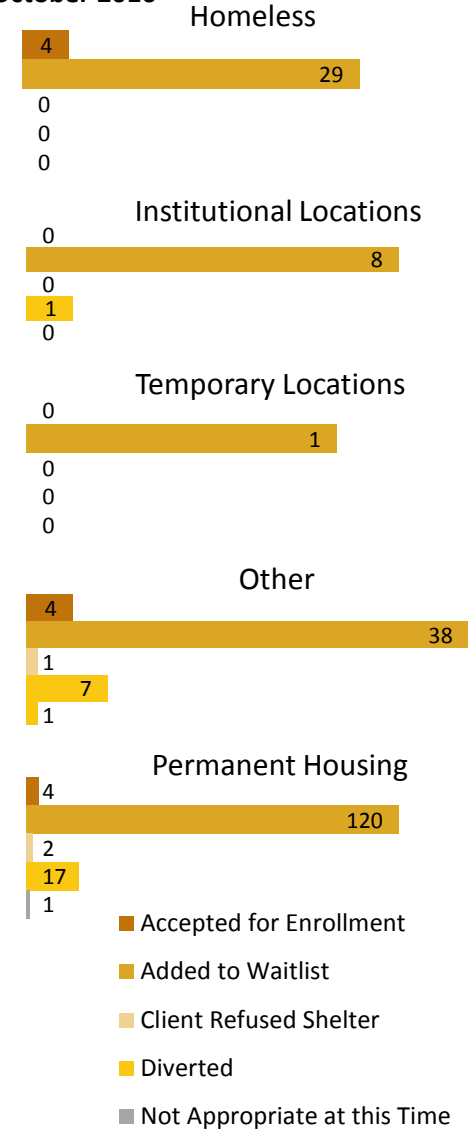
Data Source: CT HMIS

Last Three Months - By Percentage



Data Source: CT HMIS

Appointment Outcome By Living Situation October 2016



Data Source: CT HMIS